

GREENFYLDE CHURCH OF ENGLAND FIRST SCHOOL

Incorporating Cygnets and Sunny Ile Pre Schools

SILVER STREET, ILMINSTER, SOMERSET TA19 0DS

Telephone: Ilminster (01460) 52686

Fax: Ilminster (01460) 55780

Email: greenfylde@educ.somerset.gov.uk

Website Address: www.greenfylde.somerset.sch.uk

Headteacher: Miss C. Oaten



Newsletter No: 18 Friday 28th January 2022

School Term Dates 2022-2023

We have now had confirmation from the Local Authority regarding the time that is available for moving the two Ilminster schools into the new split site Primary over the Summer holidays so we can now share with you the term date calendar for 2022-2023. The change for this year will be an extra INSET day which will be taken on Monday 5th September which is to allow us some additional time to have the new school all up and running for the children. If you have a child starting Reception in September 2022 it is anticipated that their first day will be Thursday 8th September.

**DATES TO
REMEMBER**

Covid update

Like all Schools in Somerset we have seen a rise in Covid cases in the last couple of weeks amongst staff and children. We have been in touch with Public Health as we currently have 30 cases across the school/pre-schools/staff (population of around 450) and they have reassured us that we are doing everything we can and that actually our numbers are still quite low compared to other schools. We are having to move around staffing to keep classes open so thank you for everyone's help and support with this as we are trying to make things 'school as usual' as much as we can for the children.

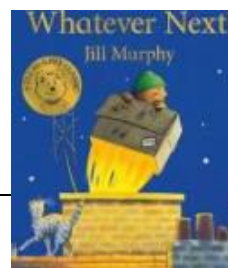
If you do receive an email from us that your child has a case in their class, if they have been in please can you consider LFTs for 7 days so we can break any transmission as quickly as possible. We appreciate doing LFTs aren't that nice (adults as well as children!) but they do help us in preventing the spread of Covid.

We will be staying in Amber enhanced measures whilst for us, our numbers are higher, and Public Health have told us they expect the peak of this Covid wave to hopefully be in the next week in schools and then we should begin to see a decline.

We wish all our staff, pupils and families with Covid a speedy recovery.

Look at a book

This week's book recommendation comes from Sandew class, they wrote 'In Reception this week, we have been reading the story "Whatever next!" by Jill Murphy. It is a story about a bear with a brilliant imagination who travels to the moon! We imagined that we could build a rocket and travel to the moon, and it inspired some writing of the things we might see along the way. ' This is a lovely story and also one of Miss Oaten's favourites as it has made an appearance at a couple of Year 4 leavers' talks as well.



Join DJ Ginge for an online speed quiz in aid of FrOGS – Saturday 29 January

Local legend in the making DJ Ginge is kindly hosting one of his popular and fun online speed quizzes in aid of Friends of Greenfylde school this Saturday 29 January. Entrance is free and donations of whatever you can afford are welcomed on the evening via PayPal if you can.

Get your friends and family round to make up your team. Join online at 7:00pm for a 7:30pm start. DJ Ginge will explain how it all works – it really is very straightforward! You'll need to download the free blue Speedquizzing app from the App store to your mobile phone and join the quiz via zoom on another device. The quizzes are well established and popular in the Ilminster community so don't feel shy about joining in – everyone is welcome and we'd love to see as many of you there as possible! The zoom link will also be posted on DJGingellminster Facebook page at 6:00pm on Saturday. Find out more about speed quizzing at: www.speedquizzing.com or just rock up at 7:00 and pick it up as you go along! Any questions then email phaedraneal@hotmail.com

DJ Ginge online speedquiz in aid of FrOGS – Saturday 29 January, 7:00pm

Join Zoom Meeting

<https://us02web.zoom.us/j/7279186668>

Meeting ID: 727 918 6668

Message from Somerset Parent Carer Forum

Next week is the beginning of Somerset's Local Offer live week. From Wednesday 2 February there are lots of free online workshops and talks for parents of children with additional needs and disabilities.

Our SEND governor had arranged a free 2 hour session on children with anxiety and how to help them on Thursday evening which may be of particular interest.

To find out all the details and to book visit <https://choices.somerset.gov.uk/025/local-offer/somersets-local-offer-live-week/>

If you want to talk to anyone about these events call Somerset Parent Carer Forum on 01458259384

Covid

What to do if your child develops symptoms of coronavirus (COVID-19) or tests positive for COVID-19

Symptoms of coronavirus (COVID-19) are a new, continuous cough, or a high temperature, or a loss of, or change in, their normal sense of taste or smell (anosmia).

If your child develops symptoms of coronavirus (COVID-19), they should get a PCR test and remain at home at least until the result is known and they are fever free (without medication) for at least 24 hours.

If **negative**, the child can end self-isolation and return to school once well;
If **positive**, the child should isolate until at least 10 days after their symptoms appeared. They may be able to leave isolation and return to school on day 6 if day 5 and day 6 lateral flow tests, tested at least 24 hours apart are both negative.

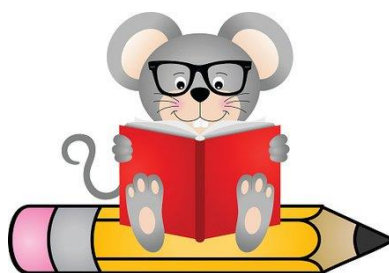
If the child has a positive test result, but does not have [symptoms](#), they should stay at home and self-isolate for 10 days from the date the positive test was taken. Isolation can end early as above. Anyone with symptoms will be eligible for a PCR test (the normally available test type) and this can be arranged via <https://www.gov.uk/get-coronavirus-test> or by calling 119.

From the 11th January, children who test positive on LFT without symptoms do not need to get a PCR test and instead start their isolation of 10 full days post the day of the test. As above this can end earlier if the additional tests are met.

A reminder that any information e.g if your child is waiting for a test or when they have received a result **must** be sent by email to the school office at greenfylde@educ.somerset.gov.uk, please don't send via School Comms as the office email is checked out of hours unlike the School Comms app. **We also request that you don't send this via Class Dojo or Tapestry.** Your child must not come in or be brought to school if they have any Covid symptoms.

If your child is identified as a close contact and are 5 and over, they should lateral flow test for 7 days and only go for a PCR test if they develop symptoms. Children should not attend school if they get a positive LFT result – see guidance above re what to do if children receive a positive LFT.

When reporting absence please state the symptoms your child is experiencing as depending on these it changes their coding on the register. **If we receive messages with just descriptions such as 'unwell/under the weather' then the office will need to follow this up with you in a telephone call.** Please can we ask families to be respectful to any calls from the office re potential Covid illness as they are only following the Government guidance.



Star of the Week

Congratulations to this week's Star of the Week nominations.

Dove	Ralph W & Seren B
Pippin	Amelia C & Florence L
Sandew	Mahfuzur R & Carter N
Golden	Sophie H & Frank R
Puffin	Daisy S & Isla L
Camelot	Willow F & Theo-Oliver B
Hook	Lumin F & Alex L
Dunkerton	Jack H & Amelia C
Morgan	Ellie-Mae McC & Reuben C
Ashton	Alexis C & Kloe F
Coker	Leon P & Poppy G
Coopers	James L-L & Hannah K
Gatcombe	Charlie D & Paige H

Stars and certificates will be presented on Thursday 3rd February at 9.30am for Reception, Year 1 and Year 2 and Friday 4th February at 9.30am for Years 3 and 4.

Families of the recipients are welcome to attend via Zoom and a link will be sent out to the contact emails we have for our pupils. We encourage all family members to stay until the end of the celebration if possible.

Please note if joining via Zoom no recordings or screen shots should be taken of the sessions for safeguarding and we ask you to remain on mute. **Please also be aware of your screen name and we ask that this is changed to your child's name.**



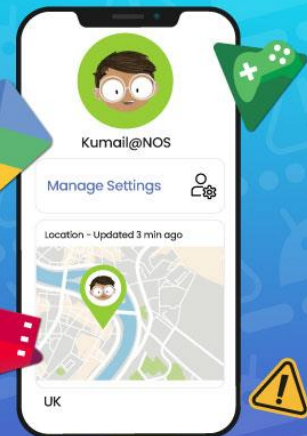
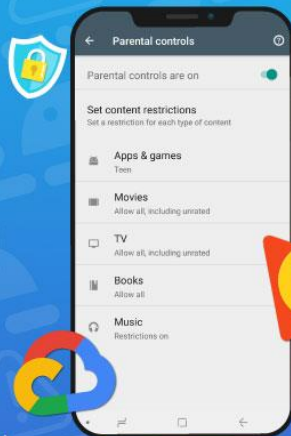
Online safety update

Most smartphones allow parents and carers to choose which apps and features appear on their child's device and which ones don't. In the guide, you'll find tips on a number of tips such as how to restrict built-in apps, the game centre and app store purchases.

At National Online Safety, we believe in empowering parents, carers and trusted adults with the information to hold an informed conversation about online safety with their children, should they feel it is needed. This guide focuses on one issue of many which we believe trusted adults should be aware of. Please visit www.nationalonlinesafety.com for further guides, hints and tips for adults.

How to Set up PARENTAL CONTROLS for APPS Android Phone

On Android phones, restricting access to particular apps usually requires going onto Google Play. From there, it's fairly easy to navigate your way through the settings to manage the parental controls and authentications relating to any apps on the device. These features can prevent your child from downloading or buying anything unsuitable for their age. Updated versions of apps or games that your child has already installed may occasionally contain something inappropriate, so we've explained how to stop those, too.



How to Block App Downloads (This Also Disables In-app Purchases):

- 1 Open Google Play Store
- 2 Tap the profile icon in the top right
- 3 Tap Settings
- 4 Scroll down to the Family section and tap Parental controls
- 5 Toggle 'Parental controls are off' to 'Parental controls are on'
- 6 Create a PIN and tap OK
- 7 Confirm your PIN and tap OK again
- 8 Tap Apps & Games
- 9 Set the age limit you wish to set
- 10 Tap Save to apply your changes

How to Stop Auto-updates

- 1 Open Google Play Store
- 2 Tap the profile icon in the top right
- 3 Tap Settings
- 4 Tap Auto-Update Apps
- 5 Select 'Don't auto-update apps' and then tap Done

Restricting Apps Through Google Family Link

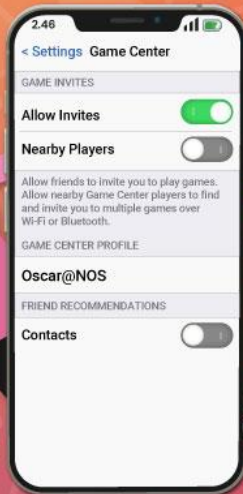
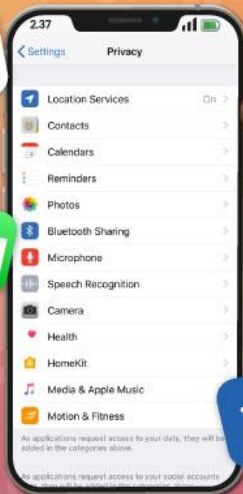
- 1 Open Google Play Family Link for parents
- 2 Tap the three horizontal lines in the top left
- 3 Select your child's account
- 4 Tap Manage
- 5 Tap Controls on Google Play
- 6 Tap Apps & Games
- 7 Select the age limit you wish to set



NOS National Online Safety
www.nationalonlinesafety.com

How to Set up PARENTAL CONTROLS for APPS iPhone

Apple devices come with built-in apps already available: Mail, FaceTime and Safari, for example. However, you can choose which apps and features appear on your child's device and which ones don't. You can also manipulate the features in Game Centre to enhance your child's safety and privacy when playing games, as well as blocking iTunes or App Store purchases if you wish.



How to Restrict Built-in Apps/Features

- 1 Open Settings
- 2 Tap Screen Time
- 3 Tap Content & Privacy Restrictions
- 4 Tap Allowed Apps (you may need to toggle this to 'on' at the top)
- 5 Enable or disable the apps you wish to appear (or disappear) on your child's device

How to Restrict Game Centre

- 1 Open Settings
- 2 Tap Screen Time
- 3 Tap Content & Privacy Restrictions
- 4 Tap Content Restrictions (you may need to switch the toggle at the top to the 'on' position)
- 5 Scroll down to Game Centre
- 6 Choose between Allow, Don't Allow, or Allow with Friends Only in the settings for each feature

How to Restrict iTunes & App Store Purchases

- 1 Open Settings
- 2 Tap Screen Time
- 3 Tap Content & Privacy Restrictions
- 4 Tap iTunes & App Store Purchases
- 5 Select Allow or Don't Allow for each feature (you can also lock these settings with a password)



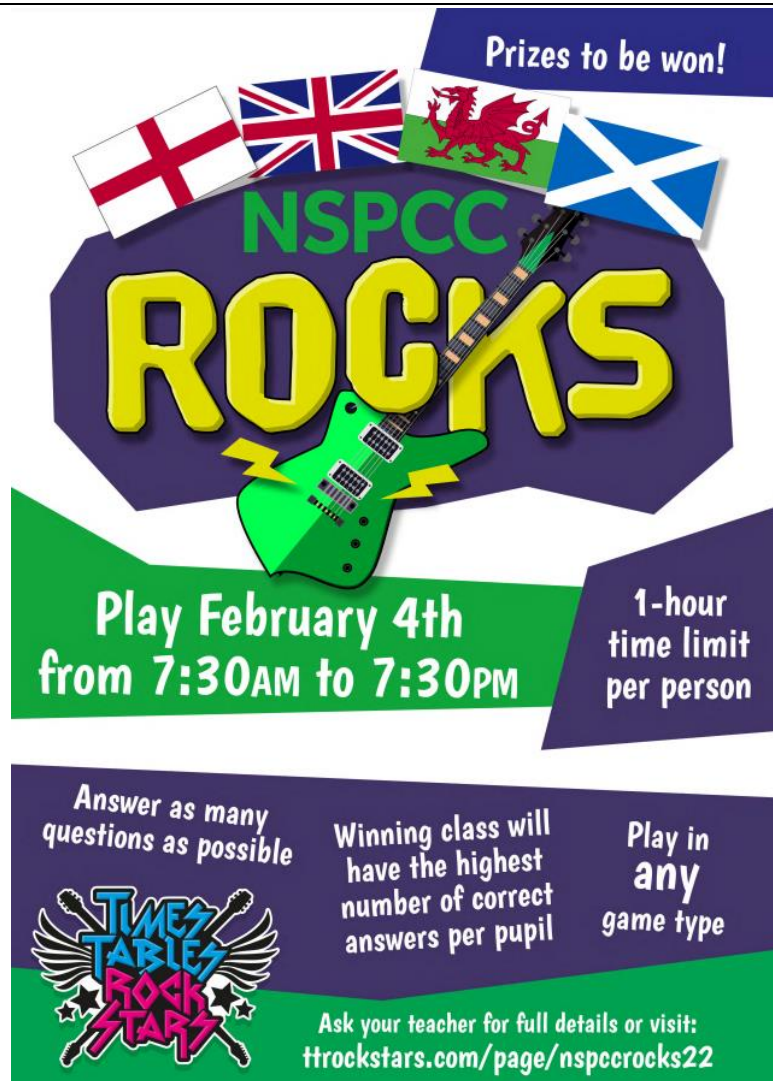
NSPCC Rocks Maths

Message from Mr Lewis and Miss Green - As part of our commitment to make maths exciting and high profile in our school, we are taking part in a friendly competition involving schools in the UK for NSPCC Number Day on Friday the 4th of February. It's all done online via play.ttrockstars.com and is open to all children from Y1 upwards who all have their own logins already. This is called NSPCC ROCKS!

For every correct answer to a multiplication or division question, your child will earn their class a point. The Times Tables Rock Stars platform will calculate the class average (the number of correct answers per pupil in the class who play during the competition hours, subject to a daily 60-minute limit (see below)). Winning classes in the school and in the competition as a whole will be the ones with the highest average. **All game modes (Gig, Garage, Studio, etc.) will count but only from games played between 7:30AM BST and 7:30PM BST on Friday 4th.**

To support player wellbeing, there is a daily time limit of 60 minutes per player. In other words, each player can earn competition points for up to 60 minutes between 7.30am and 7.30pm on Friday 4th. Once the player goes beyond 60 minutes of play on that day, they will still earn coins but will no longer earn points towards the competition.

In the spirit of the competition, please don't play on their behalf but by all means encourage and support them to the extent that it doesn't cause high stress levels or impact on family plans. We suggest a limit of half an hour a day outside school hours – some will play more, some will play less.



Prizes to be won!

NSPCC ROCKS

**Play February 4th
from 7:30AM to 7:30PM**

**1-hour
time limit
per person**

**Answer as many
questions as possible**

**Winning class will
have the highest
number of correct
answers per pupil**

**Play in
any
game type**

**Ask your teacher for full details or visit:
ttrockstars.com/page/nspccrocks22**

TIMES TABLES ROCK STARS



Sunny-Ile Pre-School Cygnet Pre-School



Newsletter - Friday 28th January 2022

Sunny Ile and Cygnet Pre School

Covid

What to do if your child develops symptoms of coronavirus (COVID-19) or tests positive for COVID-19.

Symptoms of coronavirus (COVID-19) are a new, continuous cough, or a high temperature, or a loss of, or change in, their normal sense of taste or smell (anosmia).

If your child develops symptoms of coronavirus (COVID-19), they should get a PCR test and remain at home at least until the result is known and they are fever free (without medication) for at least 24 hours.

If negative, the child can end self-isolation and return to pre-school once well; If positive, the child should isolate until at least 10 days after their symptoms appeared.

They may be able to leave isolation and return to school on day 6 if day 5 and day 6 lateral flow tests, tested at least 24 hours apart are both negative.

If the child has a positive test result, but does not have symptoms, they should stay at home and self-isolate for 10 days from the date the positive test was taken. Isolation can end early as above. Anyone with symptoms will be eligible for a PCR test (the normally available test type) and this can be arranged via <https://www.gov.uk/get-coronavirus-test-or-by-calling-119>.

From the 11th January, children who test positive on LFT without symptoms, do not need to get a PCR test and instead start their isolation of 10 full days post the day of the test. As above this can end earlier if the additional tests are met. A reminder that any information e.g if your child is waiting for a test or when they have received a result should be sent by email to sunnyile@educ.somerset.gov.uk or 01460 259732

Your child must not come in or be brought to school if they have any Covid symptoms.

Walk your dog month

January is 'Walk Your Dog' Month and what better way to kick start your New Year's Resolutions by getting out in the great outdoors and walking off some of that festive food and drink? With obvious health benefits for both your family and your dog(s), this awareness month is a great way to help dust off the January blues, get out and about, meet other dog walkers and improve your own and your dog's wellbeing.

We would love for you to share your dog walks with us on tapestry

Dates for your diary

Half term – 21st February – 25th February 2022 we return back to preschool on Monday 28th February

Sunny Ile Pre School

This week at Sunny Ile we have been singing the nursery Rhymes 'Five current buns in a bakers shop and Five little men in a flying saucer'. We used currant buns and counted aliens as they took off to go into space. What nursery rhymes do you like to sing at home?

Great British Bird Count

This weekend is also the RSPB Great British Bird Count, please follow the link below to get involved,

The children have really enjoyed making some food for the birds this week, looking at the meal words and mixing it all together, even if we did get very messy, if you wish to get involved with the count below is the link with lots of information.

https://www.googleadservices.com/pagead/aclk?sa=L&ai=DChcSEwjM4YPex8_1AhWOGgYAHYRKDZgYABAAGgJ3cw&ohost=www.google.com&cid=CAASE-RoV_Bd273PN7Zqm5UsFKBVj2s&sig=AOD64_2akZkvsAkIHXcadIy_QW_6Q8V_dg&q&adurl&ved=2ahUKEwjy_Prdx8_1AhXbgVwKHfDWCs8Q0Qx6BAGCEAE



Cygnnet Pre School


This week at Cygnets we've had lots of fun with messy play using oats and cocoa powder to create pretend birthday cakes to enjoy birthday tea parties with our friends. We've also spent a lot of time in the garden having fun on the bikes and scooters as well as enjoying the sand tray.

Lunchboxes

We have noticed a few 'nutty' items appearing in lunchboxes. Can we please remind you that we are a 'nut free' setting due to allergies and items with nuts in should **NOT** be put in children's lunchboxes?

Sound of the week

Next week our letter / sound of the week will be S.



Tuck Shop

Spring Term 2, March – April
£3 per child (50p per week)

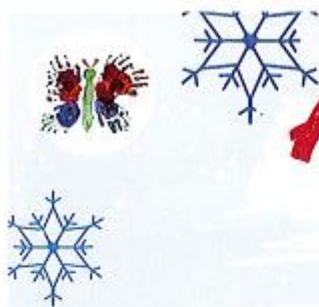
For Cash or Cheque payments, please write the name, class and quantity required on the envelope and post through the letterbox on the front door

We will also now be accepting **PayPal** payments, please send payment to elizahsander@gmail.com including your child's name, class and quantity as the reference.

Please ensure to do this as 'Friends and Family' to avoid any fines being deducted from the payment.

Don't forget to order extra bags
for friends, family & siblings

Orders must be in by 4pm on
Tuesday 15th Feb



Activity Calendar

Community Inclusion and Activity Team



February Half Term Monday 21st - Friday 25th 2022



Monday 21 February

Neroche Woodlanders
Young Wood, Staple Fitzpaine, TA3 5AZ
Seasonal Forest Activities. This includes gathering around the fire-circle, exploring, playing games, as well as a campfire cooking activity, such as making small pancakes, biscuits, or popcorn. 11am-2pm. 4-18yrs Costs £10 per family.
To book, please fill in the form on www.nerochewoodlanders.org or email info@nerochewoodlanders.org



ACTIVITY PACKS

Community Inclusion Activity Team
Friendship and Kindness themed activity pack including arts & crafts, recipes, puzzles and more! £2 per pack. Packs available for 0-11yrs and 12-18yrs. Payment on delivery please.

To order, please email ciateam@somerset.gov.uk by Monday 7th February with your child's name, age, address, phone number, nature of disability and where we can safely leave the pack if you're not in. Delivery w/c 14th February.

Step4ward-in2-growth
Activity packs tailored to the young person's interests and abilities, including puzzles, crafting, toys and games. Hand delivered if local to Shepton Mallet or sent by Royal Mail. £2 per pack.

To order, please contact Becky on 07737 331174 or Step4ward-in2growth@mail.com

Tuesday 22 February

Community Inclusion Activity Team Young Person's Day
Westlands Entertainment Centre, Westbourne Close, Yeovil, BA20 2DD
Strawberry Jam presents sea and pirate themed arts and crafts. Young people new to our service will need to attend with a parent/carer or if deemed necessary. 10am to 1pm. 8-18yrs. Costs £10 pp.
To book, call 07977 412199 from 10am on 2nd February



Wednesday 23 February

Nova Sports
Critchill School, Nursery Road, Frome, BA11 4LB.
Harry's Hydro: A chance for families to who have disabled children to swim together in a specialist hydrotherapy pool. 3 sessions available between 10.30am - 1.30pm. £20 per family. 2yrs to 12yrs.
For bookings, contact Jenny Rutter jenny@novasportsandcoaching.co.uk or call 07880 743453



Thursday 24 February

Community Inclusion Activity Team Family Day
Sidmouth Rd, Clyst St Mary, Exeter, EX5 1DR.
Crealy Adventure Park.
Meet at venue. Staff will be on site to support you from 10am to 2pm. You are welcome to stay longer! Costs £10 pp.
To book, call 07977 412199 from 10am on 2nd February



Friday 25 February

Wilderwoods Forest School
Drayton Woods, Drayton, Langport, TA10 0JZ.
Inclusive Bushcraft Camp: Explore the woods on a trail. Make a shelter, light a fire and cook pancakes. Games and crafts for survivors; whittling, weaving, leaf printing, art and flag making. Costs £15 per child. (includes lunch and support) Siblings of same family costs £12.50. No cost for adults. For 8-18yr olds.
To book, contact Hannah Aitken on 01458 252463 or hannah@wilderwoods.org



For ALL children and young people in Somerset with a disability or additional needs
*You DO NOT have to be referred to any service to access these activities, unless otherwise stated.

improving

Monday 21 February

Purple Elephant
Christchurch School, Feltham Lane,
Frome, BA11 5AJ.
Inclusive Martial Arts: Family Holiday
Fun - accessible activities for all the
family. 10am-12pm.
£1 per child donation

**To book, please contact
Lenka Grimes:
lenkagrimes@gmail.com**



Tuesday 22 February

Neroche Woodlanders
Young Wood, Staple Fitzpaine,
TA3 5AZ.
Seasonal Forest Activities. This
includes gathering around the fire-
circle, exploring, playing games,
as well as a campfire cooking activity,
such as making small pancakes,
biscuits, or popcorn. 11am-2pm.
4-18yrs Costs £10 per family.

**To book, please fill in the form
on www.nerochewoodlanders.org
or email
info@nerochewoodlanders.org or
sarah@nerochewoodlanders.org**



ACTIVITY PACKS

Yeovil Inclusion Partnership
Online activities: Storytelling, arts and crafts,
yoga, cooking. Resources delivered to your
home in South Somerset and surrounding areas
w/c 14th February and online activities available
from Monday 21st February. Costs £5.

**To order, please email
SCColes@educ.somerset.gov.uk**

Wednesday 23 February

Yeovil Inclusion Partnership
Fairmead School, Mudford Road,
Yeovil, BA21 4NZ.
Fun packed day including activities
such as: arts & crafts, bouncy castle,
SASP Sport and cooking. 10am to
3pm. Costs £15 per young person or
£25 per family. For ages 4-19yrs

**To book, call Steve Coles
07786 992229 or email
SCColes@educ.somerset.gov.uk**



Thursday 24 February

Purple Elephant
Frome Cricket Club, Rodden Road,
Frome, BA11 2AH
Nature themed Window Wanderland:
Make a picture to display in your
window during the event.
10am-12pm. £1 per child donation.

**To book, please email
Lenka Grimes
lenkagrimes@gmail.com**



WHAT'S ON ACROSS THE WEEK?

Monday 21 to Friday 25 February

Brookside Academy, Street, BA16 0PR
A variety of indoor and outdoor activities, including arts & crafts,
cooking, Wii games and sports! For 4-13 years (must be school
age), 9am-3pm, £24pp. For 14-18 years, 9am-3pm, £27pp.

**Booking is required with Harriet Dunford or Sandra Cinicola
at extendedschools@brooksideacademy.co.uk**



Wilderwoods Forest School
Drayton Woods, Drayton,
Langport, TA10 0JZ.
Inclusive Play Afternoon. Exploration
trail, games and free play, ropes
and swings. Arts and crafts using
natural materials. Help saw firewood!
Pancakes and hot chocolate by the
fire. 2pm-4.30pm. Costs £7 per child,
or £12 per family (max 3 children).
For ages 4-10yrs

**To book, contact Hannah Aitken
on 01458 252463 or email
hannah@wilderwoods.org**



Key for activities:

- Family Activity - for all members of the family to attend and enjoy
- Child/Young person can attend on their own under group supervision or with parent/carer if additional 1:1 support is required - please call the organisation to have a chat
- Child/young person must attend with a parent or carer
- Staff provided by the organisation to support the child/young person 1:1 if required - please call the organisation to see what they can provide as this may not include personal care
- Some parts of the activity are wheelchair accessible please call the organisation to find out more
- Accessible changing facilities are available please call the venue to find out more
- Activities aimed at young people/teenagers/young adults

Friday 25 February

Nova Sports
Frome Boulder Rooms, Vallis Road,
Frome, BA11 3EN.
Bouldering: Expert instruction from
the Boulder Rooms with extra
support from Nova coaches.
10:30-11:30am & 11:30am-12:30pm
£10 per child. 7yrs to 18yrs.

**For bookings, contact Jenny Rutter
jenny@novasportsandcoaching.co.uk
or call 07880 743453**





SOMERSET
County Council



Useful Information

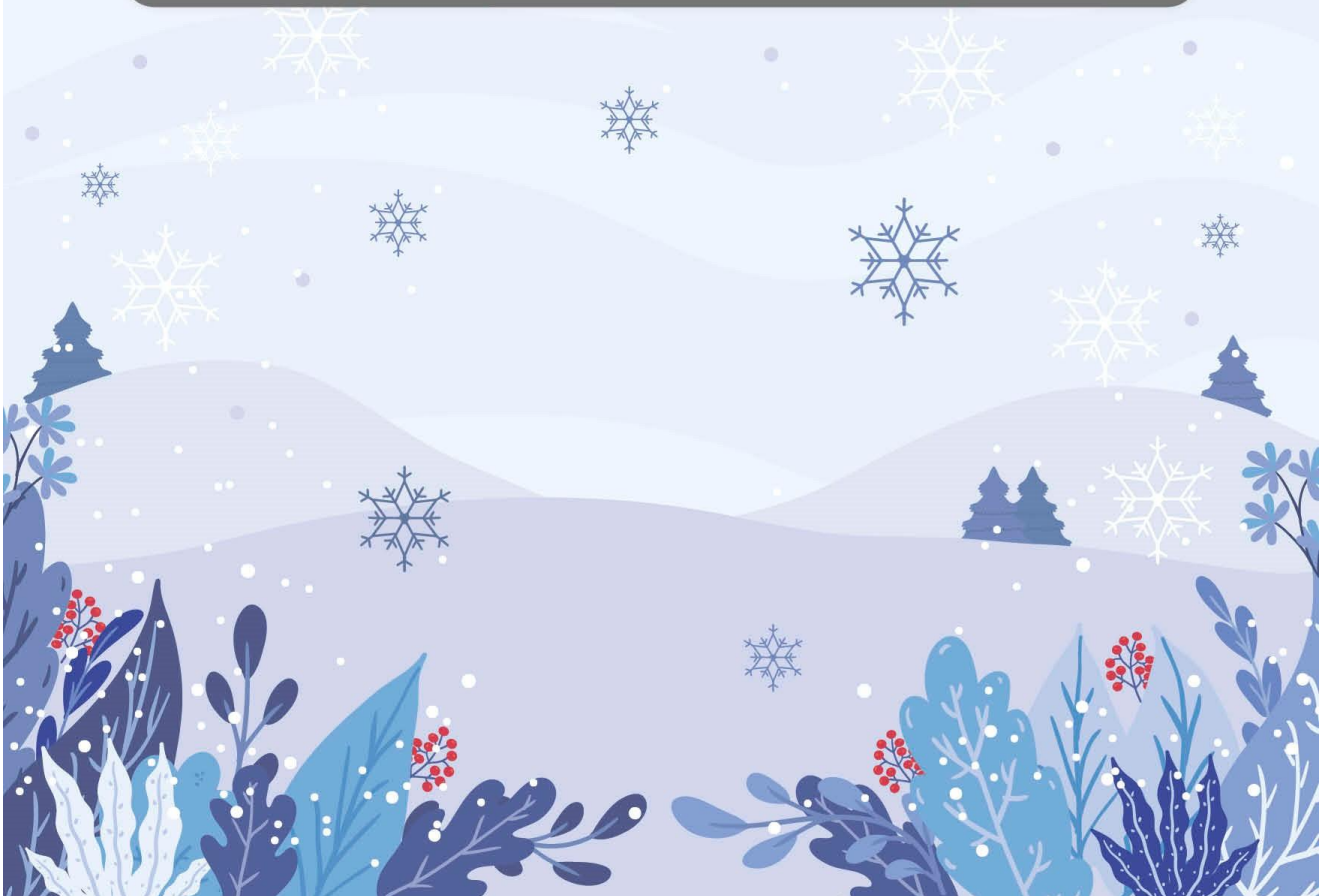
Who are the people offering the activities? Organisations who have experience of working with children and young people with a disability or additional need and their families. Activities can be adapted to suit the children and young people who would like to attend. Please call them to chat about your child / young person's needs.

Activities offered by the Community Inclusion and Activity Team - Dependant on the child / young person needs, we can provide a day out without parent / carer as we offer group supervision. If it is the first time your child / young person has accessed a trip with our team, a parent / carer will need to attend. We require payment a minimum of 2 weeks prior to the day. Please note, spaces for children and young people with a disability or additional need will be prioritised first, with spaces offered to siblings once bookings have closed if we have room. Online payment at www.somerset.gov.uk/cwd

Don't forget our Activity Day Passes - Available to ALL families in Somerset with a child or young person with a disability or additional need - Puxton Park, Noah's Ark, Bristol Zoo & The Wild Place, Abbotsbury, Ferne Animal Sanctuary, Hestercombe gardens, Court farm. Please email CIATeam@somerset.gov.uk to find out more or visit www.somerset.gov.uk/cwd to view the flyer.

Max Card - A FREE card for all children and young people with a disability or additional need in Somerset aged 0-25 years. This card can be used at many places all over the UK offering discounts and special rates when you show the card. Visit www.mymaxcard.co.uk for more info. Cards can ONLY be issued by Somerset County Council to people living in Somerset. Call 01823 358117 or email ciateam@somerset.gov.uk

If you would like help with the calendar and how to access activities please email the team ciateam@somerset.gov.uk





September 2022					October 2022					November 2022												
M			5	12	19	26	M		3	10	17	24	31	M			7	14	21	28		
Tu			6	13	20	27	Tu		4	11	18	25	Tu		1	8	15	22	29			
W			7	14	21	28	W		5	12	19	26	W		2	9	16	23	30			
Th		1	8	15	22	29	Th		6	13	20	27	Th		3	10	17	24				
F		2	9	16	23	30	F		7	14	21	28	F		4	11	18	25				
Sa		3	10	17	24	Sa	1	8	15	22	29	Sa		5	12	19	26					
Su		4	11	18	25	Su	2	9	16	23	30	Su		6	13	20	27					
December 2022					January 2023					February 2023												
M			5	12	19	26	M		2	9	16	23	30	M			6	13	20	27		
Tu			6	13	20	27	Tu		3	10	17	24	31	Tu			7	14	21	28		
W			7	14	21	28	W		4	11	18	25	W		1	8	15	22				
Th		1	8	15	22	29	Th		5	12	19	26	Th		2	9	16	23				
F		2	9	16	23	30	F		6	13	20	27	F		3	10	17	24				
Sa		3	10	17	24	31	Sa		7	14	21	28	Sa		4	11	18	25				
Su		4	11	18	25	Su	1	8	15	22	29	Su		5	12	19	26					
March 2023					April 2023					May 2023												
M			6	13	20	27	M			3	10	17	24	M			1	8	15	22	29	
Tu			7	14	21	28	Tu			4	11	18	25	Tu			2	9	16	23	30	
W		1	8	15	22	29	W			5	12	19	26	W			3	10	17	24	31	
Th		2	9	16	23	30	Th			6	13	20	27	Th			4	11	18	25		
F		3	10	17	24	31	F			7	14	21	28	F			5	12	19	26		
Sa		4	11	18	25	Sa		1	8	15	22	29	Sa			6	13	20	27			
Su		5	12	19	26	Su		2	9	16	23	30	Su			7	14	21	28			
June 2023					July 2023					August 2023												
M			5	12	19	26	M			3	10	17	24	31	M				7	14	21	28
Tu			6	13	20	27	Tu			4	11	18	25	Tu			1	8	15	22	29	
W			7	14	21	28	W			5	12	19	26	W			2	9	16	23	30	
Th		1	8	15	22	29	Th			6	13	20	27	Th			3	10	17	24	31	
F		2	9	16	23	30	F			7	14	21	28	F			4	11	18	25		
Sa		3	10	17	24	Sa		1	8	15	22	29	Sa			5	12	19	26			
Su		4	11	18	25	Su		2	9	16	23	30	Su			6	13	20	27			

Key:

School Holiday

Bank Holiday

Term Time

Inset Days

Term dates summary:

- Term 1: 01 September – 21 October 2022 (37 days)
- Term 2: 31 October – 16 December 2022 (35 days)
- Term 3: 03 January – 10 February 2023 (29 days)
- Term 4: 20 February – 31 March 2023 (30 days)
- Term 5: 17 April – 26 May 2023 (29 days)
- Term 6: 05 June – 21 July 2023 (35 days) **TOTAL = 195**

Bank and public holidays 2022/23

Christmas Day Bank Holiday	27 December 2022*	Easter Monday	10 April 2023
Boxing Day Bank Holiday	26 December 2022	May Day Bank Holiday	01 May 2023
New Year's Day Holiday	02 January 2023*	Spring Bank Holiday	29 May 2023
Good Friday	07 April 2023	Summer Bank Holiday	28 August 2023

*Replacement Bank Holiday day when the Bank Holiday falls on a weekend

Academy, Free Schools, Foundation & Voluntary Aided schools can set their own term dates and may differ from ours. Please check with the individual schools for their term dates.